



Bern, April 2<sup>nd</sup> 2010

## ROPETECH adventure park Bern

ROPETECH is an adventure park amidst the natural tree population of the Dählhölzliwald in Bern. Ten parcours lead through the forest at a height of 4 to 23 meters and offer you a unique experience. Due to the different degrees of difficulty of the parcours every visitor will find a fitting course. The mixture of experience of nature, thrill and action guarantees unforgettable impressions. Bridges and zip lines with a total length of 3'000 meters lead through the forest – ROPETECH is one of the biggest adventure parks in Switzerland.

Always secured with karabiners, the differently challenging obstacles can be crossed. Climbing up and down the trees is an exciting experience. Attached with pulleys, riding the zip lines is a lot of fun. Three parcours for our youngest guests are equipped with a continuous belay system. Children aged 4 to 9 can climb on these parcours while a parent watches them from the ground. The children are always secured on these parcours without having to transfer karabiners.

### 1 How to reach us

ROPETECH is located in the entrance of the Dählhölzli forest near the Thunplatz in Bern.

#### 1.1 Public Transport

It is recommended to come by public transport. The tram lines 3 and 5 and the bus lines 19 and 28 will carry you from the main station to the stop "Thunplatz" in about 10 minutes. The adventure-park is located at the entrance of the Dählhölzli-forest (at a 2 minutes walk from the stop "Thunplatz").

#### 1.2 By car

After leaving the highway at the exit „Bern Ostring“ you will reach the roundabout „Burgernziel“ after 320 meters. Follow the signs to „Zentrum“ for another 550 meters until you arrive at „Thunplatz“ with a bus- and tramstop in the middle of the roundabout. Exit the roundabout at the fifth exit and enter the forest. After passing the parking area you are at the entrance of the park. Feed the following address into your GPS to get directions to the park: Thunplatz 15, 3005 Bern.

#### 1.3 Car parking

There are few parking spots at the entrance of the park. The parking spots are subject to fee. In the neighbourhood there are some more parking spots (blue parking zone).

## 2 Opening hours

In consequence of high wind or thunderstorm the park can be closed at any time. Else, the park is open as follows:

April through October open daily 10.00 - 19.00\*

Additionally: Night parcours from May till October every Friday 19:00 – 22:00\*\*.

Winter season for groups on request 10.00 - 18.00

Last check-in for visitors without customer card 2.5 hours before park closure, for visitors with valid customer card 2 hours before park closure.

Opening hours are subject to alterations.

\* October 10:00 – 18:00

\*\* October 18:00 – 22:00



## 3 Admission

### 3.1 Single person

Children's parcours CHF 21.00

Child < 16 years CHF 26.00

Student/senior CHF 31.00

Adult CHF 36.00

### 3.2 Families

1 adult, 2 children CHF 83.00

1 adult, 3 children CHF 104.00

2 adults, 1 child CHF 93.00

2 adults, 2 children CHF 114.00

2 adults, 3 children CHF 135.00

### 3.3 School/Boy-scouts (in groups)

Schools and boy-scout-groups with a minimum size of 15 people get a CHF 5.00 discount per person.

- This discount is also applied to the teacher or group-leader.
- Other groups with a minimum size of 15 people get a discount of 10% off the regular price.
- Prices are subject to alterations.

Minors have to bring a written consent of a parent before climbing the parcours.  
Please download the according form from our internet site.

For further questions, please contact us at [info@ropetech.ch](mailto:info@ropetech.ch)



Bern, April 2<sup>nd</sup> 2010

## Rules of the ROPETECH adventure park

### 1 General provisions in the ROPETECH park

#### 1.1 Follow instructions

The instructions of the ROPETECH crew as well as the signage in the park must be followed. Non-compliance can result in exclusion from the park.

#### 1.2 Risks

Climbing the parcours can be risky: clothes can be ruined or damaged, dents (e.g. by the harness) or injuries can occur.

All visitors of the park have to secure themselves at all times with the karabiners or the rope-rollers to ensure against risks. High hazard risks include downfall or even death.

By following the instructions the risks are minimized.

#### 1.3 Responsibility

The visitors access the park independently and on their own responsibility.

Visitors who endanger or scare themselves or other visitors will be excluded from the park.

#### 1.4 Insurance and liability

The customers are liable for themselves. They have to make sure that their health- and casualty-insurance coverage is sufficient. They enter the adventure park at their own risk.

#### 1.5 Legal proceedings

In any case of legal proceeding, swiss law will be applied. The court of jurisdiction will be Bern.

#### 1.6 Partner-check

The parcours can only be entered in groups of two or more. During the partner-check, the two partners check each other. This check must take place at every transfer on the parcours. The check involves the harness, the loops, the karabiners, the rope-rollers, the helmet as well as the adherence to the instructions and the communication between the partners.

The partner-check contains a visual and – if necessary – manual control.

#### 1.7 Admission

The admission to the ROPETECH adventure park Thunplatz is only possible with a valid ticket.

The admission fee includes the equipment for a maximum duration of 4 hours, the compulsory test, the test-parcours, the assistance by the ROPETECH crew and the access to the parcours.

#### 1.8 Equipment

It is strictly forbidden to pass on the equipment to another party. If the equipment is taken off (e.g. in order to use the bathroom) it's fit has to be checked by a member of the ROPETECH crew before climbing up again.

#### 1.9 Alcohol, drugs

It is strictly forbidden to enter the park after having drunk alcohol or after having taken any kind of drugs.

#### 1.10 Trash

Do not throw your trash on the ground! It is also forbidden to smoke, drink or eat on the parcours.

#### 1.11 Playground

The playground is not observed by the ROPETECH crew. Children have to be accompanied by an adult when accessing the playground. Visitors access the playground on their own responsibility.



## 2 Conditions to enter the ROPETECH adventure park

### 2.1 General conditions

#### 2.1.1 Shoes

To enter the park, gym- or trekking shoes must be worn.

#### 2.1.2 Long hair

Guests with long hair have to wear a hairnet for their safety.

#### 2.1.3 Maximum Weight

For your safety, the maximum weight allowed on the parcours is 120 kg (240 pounds, 18 stone, 265 lb).

#### 2.1.4 Children younger than 18 years

Children younger than 18 years have to show the written agreement of their parents to enter the ROPETECH park.

#### 2.1.5 Selection of the parcours

Children aged 4 to 9 can climb on the children's parcours A, B, and C. Persons from 8 to 99 years can climb on the parcours 1 to 7. Before entering the park, children aged 8 or 9 have to decide which parcours they want to ascent, since different equipment is used on the children's and the regular parcours.

### 2.2 Parcours 1 to 7

#### 2.2.1 Rules of the park

All guests have to read and understand the rules of the park before entering.

#### 2.2.2 Test and demonstration parcours

Before entering the park, every person has to pass the theory-test and the test-parcours error-free at least once every year.

#### 2.2.3 Attendance

Children younger than 14 years must be accompanied by an adult (4 children per adult at most). Professional guides can be hired from the ROPETECH crew for an additional fee. Please book your guide in advance.

#### 2.2.4 Minimum height

To be allowed on the easier parcours (1 & 2) one must be able to reach 140 cm (4ft 7in). To be allowed on all the other parcours, one must be able to reach 170 cm (5ft 7in). The height is measured with stretched arms.

#### 2.2.5 Age restrictions for parcours access

Children are allowed to enter the park according to the following restrictions:

- 8-9 years: Parcours 1+2
- 10-13 years: Parcours 1, 2, 3, 5, 6
- 14-99 years: Parcours 1-7

### 2.3 Children's parcours A to C

#### 2.3.1 Preparation

To prepare for the climbing on the children's parcours, the accordant instruction has to be completed.

#### 2.3.2 Minimum height

To be allowed on the children's parcours one must be able to reach 100 cm (3ft 4in). The height is measured with stretched arms.

#### 2.3.3 Age restrictions for parcours access

The children's parcours with continuous belay system can be entered by children aged 4 to 9.

### 3 Behaviour on the parcours

#### 3.1 Always attached

Make sure that always at least one karabiner is attached on the rope. In no case, visitors are allowed to be on the parcours without being secured. **Visitors who are not secured will be expelled from the park.**

#### 3.2 Fixed direction

There's only one way to tour the parcours. The end of every bridge and zip-line is taped yellow. It is forbidden to enter bridges or zip-lines from the side, where the yellow tape is (one-way streets!).

#### 3.3 Behaviour in case of blocking

The following steps have to be taken in the case of blocking due to technical malfunction or anxiety: make sure that the blocked persons are secured, then call for assistance. All people have to stay attached on the belay-system until assistance (park personnel) arrives.

#### 3.4 Behaviour on the children's parcours

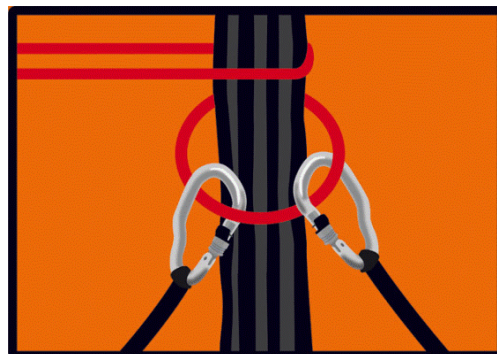
The children's parcours are equipped with a continuous belay system. At the beginning of each parcours the speed runner is attached to the rope. The whole parcours is completed without removing or transferring the speed runner (security system).

On the children's parcours all children must be accompanied by an adult who follows the child on the path on the the ground.

#### 3.5 Plate-formes

Maximum 3 people can stand on a small platform at the same time. On the big platform, maximum 10 people are allowed.

On the platforms you must hook the karabiners on to the red rope.

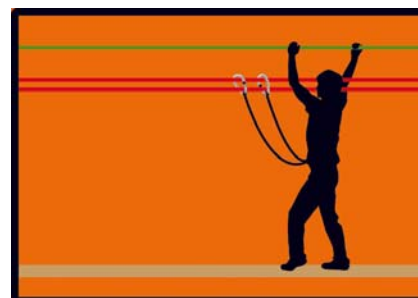
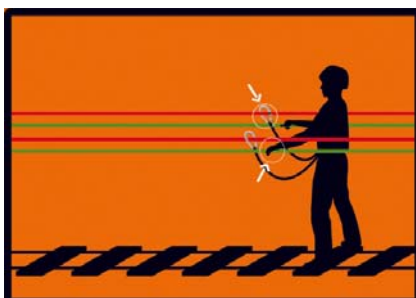
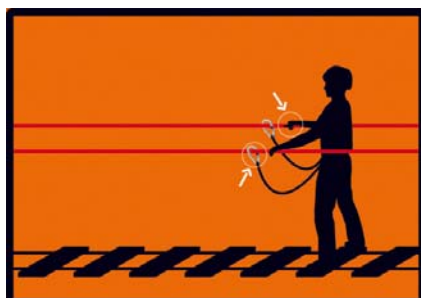


#### 3.6 Bridges

Maximum 1 person is allowed to walk on a bridge at a time. It is strictly forbidden to jump, rock or swing on the bridges.

On bridges you **hook both karabiners on to the red ropes**, if there is a green rope, you can hold on to it with your hands.

If the two red ropes are mounted one upon the other (parcours 7), you **attach both karabiners (one in each direction) on both red ropes**.



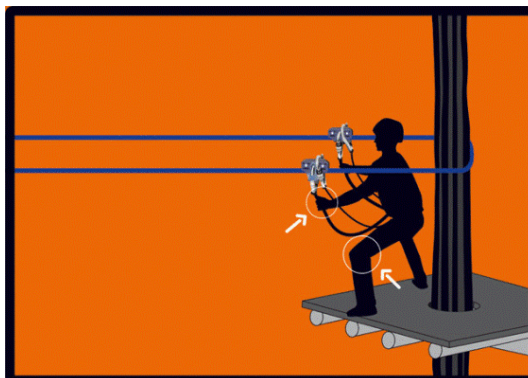
### 3.7 Zip-Lines

Before you attach to the zip-line, you need to make sure, that the rope is free.

To attach on the zip-line you first hook both pulleys on to the blue ropes, then you hook one karabiner after the other behind the pulley and fix them on the pulley.

Depending on your weight and the position of the zip-line you may not arrive at the platform on the end of the zip-line. In this case you turn around and pull yourself to the next platform. Don't go back to the platform you started from!

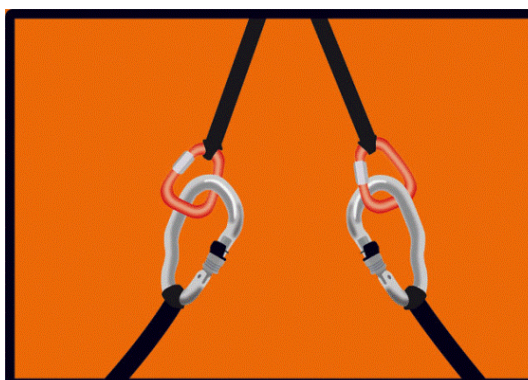
The pulleys are always attached on the blue ropes.



### 3.8 Ascends and descends

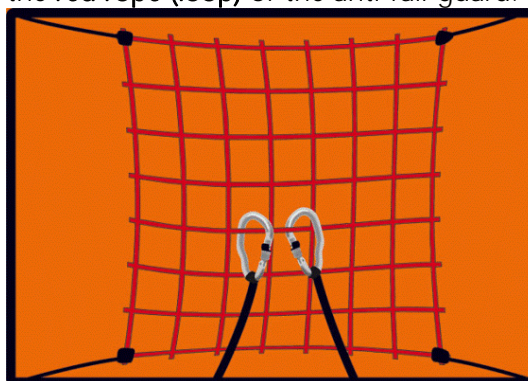
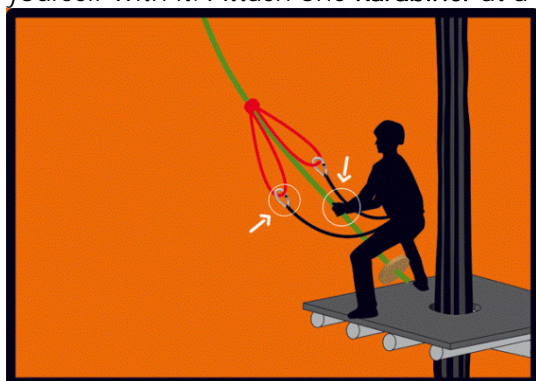
To ascend or descend you secure yourself with an anti-fall-guard. Attach both karabiners (one at a time) on the red loops of the anti-fall-guard.

After ascending or descending you attach one karabiner after the other on the red rope.



### 3.9 Tarzan jump

To do the tarzan jump you attach one karabiner after the other on to the red rope (loop). The liana ends in a climbing-net to which you have to hold on with both hands. Then you attach one karabiner after the other directly on to the net and you pull the anti-fall-guard in order to secure yourself with it. Attach one karabiner at a time on the red rope (loop) of the anti-fall-guard.



### 3.10 Loose objects

Personal objects that could fall down from the parcours have to be attached. Please ask for a sling.

### 3.11 Questions or uncertainties

Please contact [info@ropetech.ch](mailto:info@ropetech.ch) if you have any questions or uncertainties.

Thank you for your attention!